



**ROTEK RD 800-6000  
Reverse Osmosis Systems**

- ★ Specialized Micro-Computer Controller
- ★ Fully Equipped and Customizable
- ★ High Recovery Rate
- ★ Low Energy Consumption
- ★ High Flow Low-Energy Membranes
- ★ Low Maintenance
- ★ Compact Space Saving Design

ROTEK Reverse Osmosis Systems feature an excellent pre-treatment design with high quality components to offer high performance. ROTEK systems are designed for high recovery rates and minimum energy consumption. Experience greater savings with lower maintenance and operation costs when you install a ROTEK Reverse Osmosis System.

## Product Description:

ROTEK compact commercial reverse osmosis system is a durable piece of equipment which, with proper care and maintenance will last for many years. **RD series** systems are part of a family of reverse osmosis units designed for operation with fresh and brackish feedwaters having TDS values below 2,000ppm. Models are available with permeate outputs of between 150 and 1000 litres/hr as shown in the specifications tables.

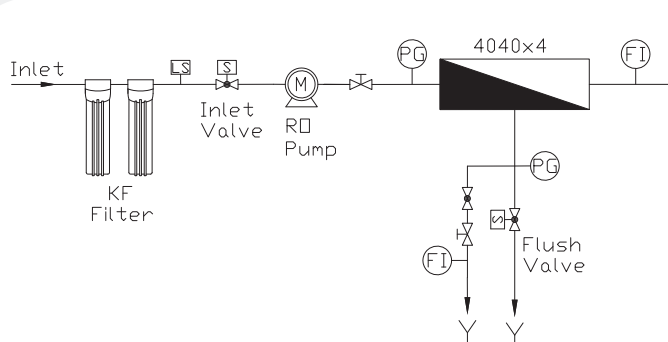
## Specifications:

Specifications \ Models		RD 800	RD 1500	RD 3000	RD 4500	RD 6000
Capacity	GPD / LPH	800 / 150	1500 / 250	3000 / 500	4500 / 750	6000 / 1000
Working Pressure	PSI / BAR	150 - 200 / 10 - 14				
Pre-Filtration		( 20" Filter Housing x 2 ) + ( 20" PP Cartridges 5u + 1u )				
Booster Pump		Rotary Van Pump + Motor (1HP)		Multi-staged Centrifugal Pump (3HP)		
Membrane	Material	T.F.C with FRP outer wrap				
	Size X Unit	2540 x 1	4040 x 1	4040 x 2	4040 x 3	4040 x 4
Membrane Housing	Material	High pressure FRP end port type				
	Size X Unit	2540 x 1	4040 x 1	4040 x 2	4040 x 3	4040 x 4
Flow Meters		Permeate / Concentrate				
Pressure Gauges		Feed water pressure / Booster pump outlet pressure gauges				
Water quality indicator		T.D.S meter with LCD				
Electrical Controls		Micro-computer control, overload breakers, LED indicators				
Frame		Electro-Polished Stainless steel 304				
Weight		87 KG	101 KG	113 KG	132 KG	145 KG

## Feed Water Parameters:

Turbidity (SDI)	< 5
T.D.S.	< 2000 ppm
Temperature	+ 5 to + 40°C
Free Chlorine	0 ppm
pH	3 - 11
Iron	< 0.01 ppm

## System Schematic:



Raw water source and quality is the key element that directly effect on the choice of pre-treatment equipment, pumps, piping, membranes...etc. ROTEK has been designing Reverse Osmosis systems, and their critical pretreatment equipment for over twenty years. Please don't hesitate to send us your inquiry and see how ROTEK can help to meet your water treatment needs.

Distributed By: